



PROXIMA^{RM}

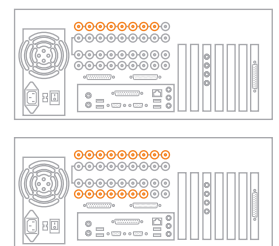


- Proxima
- Proxima RM
- Proxima LC
- Proxima LC PLUS
- Proxima LE
- Proxima LE NET

PROXIMA RM DVMS is a 19" rack mountable (4RU) fully-featured 4 channel Digital Video Management System designed for industrial-level installations.

8 or 16 unsynchronised cameras with bidirectional audio can be connected to each PROXIMA RM. PROXIMA RM can be used as a standalone unit or as a server over any TCP/IP network with undiminished performance.

- 4RU 19" rack enclosure



PROXIMA RM DVMS seamlessly combines varying recording modes with self-contained motion detection features, external alarm inputs and built in relay outputs. With up to 1000 GB (RAID optional) of internal storage coupled with an efficient cooling system, PROXIMA RM DVMS can be used to store months of audio/video material.

PROXIMA

PROXIMA is a fully-featured 4, 8 or 16 channel Digital Video Management System that offers video recording, motion detection, multiplexing, and video transmission capabilities. Its Pentaplex functionality allows for simultaneous recording, playing, viewing, archiving and transmitting at all times, in high resolution and with deterministic performances, regardless of image content or system activity.

PROXIMA is the ideal solution for multi-site installations where high performance levels are required. It is also perfect for anybody concerned with space and bandwidth issues: the transport industry (stations, but also vehicles such as trains, buses, planes etc.), banks, shopping centers, schools and residences are some of the sectors where PROXIMA is regarded as one of the most advanced systems on the market today.

- Auto-configuration wizard
- Full screen live
- Full screen playback
- Spot monitor outputs
- Alarm inputs
- Relay outputs
- Pre-alarm recording
- Pre-motion recording
- Virtual zoom
- Image touch-up
- Image print
- Image/video export
- Image/video export authentication
- Embedded operating system
- Firmware upgrade via network
- Compatible with existing networks

Thanks to its Wavelet compression technology PROXIMA can store crisp, clear, high resolution, full-frame images at 720x576/720x480 pixels (PAL/NTSC). Image compression, image resolution and all other recording parameters can be adjusted on a camera by camera basis. All images are digitally signed and encrypted, protecting against tampering or modification.

PROXIMA servers can be remotely managed. An unlimited number of PROXIMA servers can be connected to the network and used by one or more clients to display live or recorded video, to transmit live audio and to easily update the software.

PROXIMA has been designed as the successor of traditional non-digital CCTV systems. Its features, together with its flexibility, ease of installation and of maintenance, combine in a single product functions once obtainable only with many different systems.

Its intuitive interface offers the highest standards of usability and allows the user to have full control of the system.

PROXIMA is compatible with CIEFFE hardware and software, i.e. it can be connected with any CIEFFE DVMS and is compatible with all the software suite, including the powerful SITE MANAGER that can manage complex and multi-functional installations.

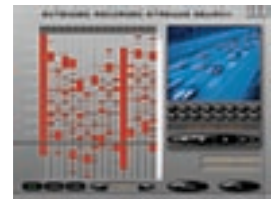




	PROXIMA 8 RM	PROXIMA 16 RM
Video inputs	8	16
Loopthrough	Yes	Yes
Audio channels	1 mono	1 mono
Spot monitors	2	4
Audio channels (bi-directional)	1	1
Alarm inputs (optoisolated)	16	16
Auxiliary outputs (relay)	16	16
Operator Interface	VGA/CVBS	VGA/CVBS
Internal storage archive	Up to 1TB native	Up to 1TB native
Raid5 archive with hot swap disks	Yes (1TB Version)	Yes (1TB Version)
Recording speed	50/60 IPS*	50/60 IPS*
Resolution	720x576/720x480*	720x576/720x480*
IPS per camera	From 1 IPS to 25/30 IPS*	From 1 IPS to 25/30 IPS*
Recording compression algorithms	Wavelet	Wavelet
Transmission compression algorithms	Wavelet / Delta Wavelet	Wavelet / Delta Wavelet
Ethernet ports	Gigabit	Gigabit
USB port	Yes (v2.0)	Yes (v2.0)
Serial interface	RS.232	RS.232
Keyboard / Mouse port	PS/2	PS/2
Operating system	XP Embedded	XP Embedded
Main processor	Intel P4	Intel P4
Power supply	110 / 220 VCA ± 10%	110 / 220 VCA ± 10%
Power consumption	300 W	300 W
Operating temperature	5 – 50 °C	5 – 50 °C
Relative humidity	8 – 90% non condensing	8 – 90% non condensing
Weight	20Kg	20Kg
Dimensions	435 x 550 x 177 mm	435 x 550 x 177 mm



Easy to use 'point & click' interface



The search interface displays months of recorded video

HIGH PERFORMANCE AND QUALITY

- No performance degradation with unsynchronised cameras
- Recording speed of 50/60* full frame images per second at maximum quality and resolution
- True Pentaplex Functionality – simultaneous recording, playing, viewing, archiving and transmitting at all times, regardless of image content or system activity
- Multi-sector recording – multiple recording speeds, recording qualities and recording times for each camera
- Powerful networkability – true client-server architecture with full remote control via TCP/IP
- Multiple image compression algorithms (Wavelet, Delta Wavelet, MPEG4)
- PTZ Control – fully integrated multi-vendor PTZ support with minimum latency

REAL TIME MOTION DETECTION

- Motion detection – integrated Dynamic Leading Edge motion detection, configurable for each input
- Camera Boost – automatically increase or decrease camera recording rates in response to detected activity

FULL NETWORKING

- Integrated web video/audio server for connections via Internet Explorer
- Delta Wavelet - high quality video transmission on extremely low bandwidth

EASY TO USE

- Point-and-click graphic user interface for simple, immediate and precise control
- Visual Search – fast and easy access to all recorded material, simple and effective
- Flexible user management – control access to cameras, functions, bandwidth by user

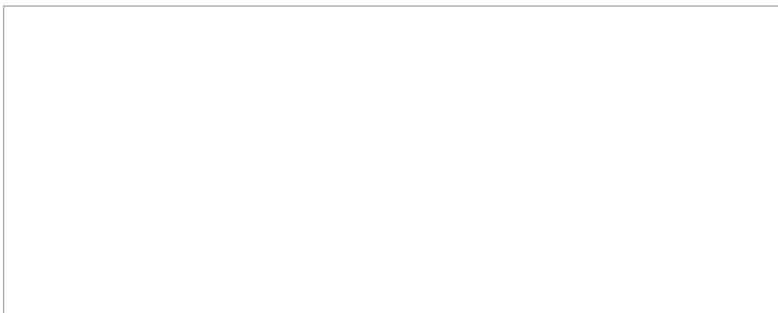
COMPATIBLE SOFTWARE

- RemoteControl - Full TCP/IP Client
- RemoteView - Simple TCP/IP Client
- Wavelet Movie Viewer
- VisionWeb - Internet Explorer TCP/IP Client
- SiteManager - Full TCP/IP Multi-server Client
- Cieffe Developer Kit API
- Cieffe VM - Virtual Machine Integration Interface

HARDWARE OPTIONS

- Internal CD writer
- External USB CD writer
- Gigabit Ethernet card
- LS240 USB drive
- SCSI port
- 12VDC power supply
- 24VDC power supply
- USB RS422/RS485 interface for dome control
- External RAID5 storage

CIEFFE are continuously in research and development and therefore reserves the right to alter specifications and prices without notice. For precise information, please contact your CIEFFE representative. Subject to change in design and specifications. Subject to error.



Italy - United Kingdom - Benelux
New Zealand - Australia - Japan
USA - Middle East - Singapore

2 year warranty

* PAL / NTSC

CIEFFE s.r.l.

Via Lavoratori Autobianchi, 1
Edificio 23
20033 Desio - Milano - ITALY

phone +39 0362 17935
fax +39 0362 1793590

www.cieffe.com
info@cieffe.com

CIEFFE Benelux Bvba

Mechelsesteenweg 244
B-1800 Vilvoorde
Belgium
Phone: +32 (0)2 253 2829
Fax: + 32 (0)2 253 5293

CIEFFE (Australia) Pty Ltd

59 - 63 Captain Cook Drive
Caringbah, NSW 2229
Australia
Phone +61 (0) 2 9531-2122
Fax +61 (0) 2 9531-2126

CIEFFE (UK) Ltd

60 Priestley Road
Surrey Research Park
Guildford
Surrey GU2 7YS
United Kingdom
Phone: +44 (0) 1483 300456
Fax: + 44 (0) 1483 301456

CIEFFE (NZ) Ltd

Gnd Floor, 180 Molesworth Street,
P O Box 2789 Wellington,
New Zealand
NZ Freephone 0800 PROXIMA
Phone +64 (0) 4 471-2179
Fax +64 (0) 4 473-8619

